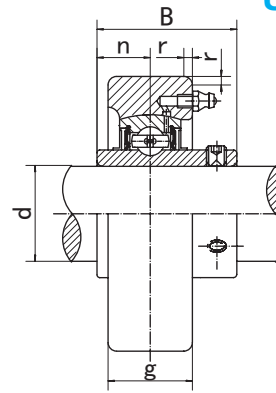
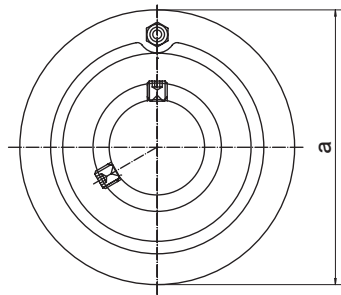


Cartridge Units

UCCX (Medium-duty)



Unit NO.	Dimensions (mm / in.)						Bearing No.	Housing No.	Weight (kg)
	d	a	g	r	B	n			
UCCX05	25	90	27	2	38.1	15.9	UCX05		
X05-13	13/16						UCX05-13	CX05	1.00
X05-14	7/8	3.5433	1-1/16	0.079	1.5000	0.626	UCX05-14		
X05-15	15/16						UCX05-15		
X05-16	1						UCX05-16		
UCCX06	30	100	30	2.5	42.9	17.5	UCX06		
X06-17	1-1/16						UCX06-17	CX06	1.30
X06-18	1-1/8	3.937	1-3/16	0.098	1.6890	0.689	UCX06-18		
X06-19	1-3/16						UCX06-19		
X06-20	1-1/4						UCX06-20		
UCCX07	35	110	34	2.5	49.2	19	UCX07		
X07-21	1-5/16						UCX07-21	CX07	1.70
X07-22	1/3/8	4.3307	1-11/32	0.098	1.937	0.748	UCX07-22		
X07-23	1-7/16						UCX07-23		
UCCX08	40	120	38	2.5	49.2	19	UCX08		
X08-24	1-1/2	4.7244	1-1/2	0.098	1.937	0.748	UCX08-24	CX08	2.20
X08-25	1-9/16						UCX08-25		
UCCX09	45	120	38	2.5	51.6	19	UCX09		
X09-26	1-5/8						UCX09-26	CX09	2.10
X09-27	1-11/16	4.7244	1-1/2	0.098	2.0315	0.748	UCX09-27		
X09-28	1-3/4						UCX09-28		
X09-29	1-13/16						UCX09-29		
UCCX10	50	130	40	2.5	55.6	22.2	UCX10		
X10-30	1-7/8						UCX10-30	CX10	2.60
X10-31	1-15/16	5.1181	1-37/64	0.098	2.189	0.874	UCX10-31		
X10-32	2						UCX10-32		
UCCX11	55	150	42	3	65.1	25.4	UCX11		
X11-33	2-1/16						UCX11-33	CX11	3.90
X11-34	2-1/8						UCX11-34		
X11-35	2-3/16	5.9055	1-21/32	0.118	2.563	1.00	UCX11-35		
X11-36	2-1/4						UCX11-36		
X11-37	2-5/16						UCX11-37		
UCCX12	60	160	44	3	65.1	25.4	UCX12		
X12-38	2-3/8	6.2992	1-47/64	0.118	2.563	1.00	UCX12-38	CX12	4.60
X12-39	2-7/16						UCX12-39		